



www.bplmedicaltechnologies.com



Happier Living Everyday

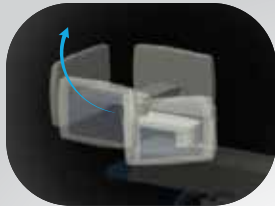
A World Class Surgical Imaging Experience



Follow us on



Crafted for Enhanced User Experience



Ergonomic Touch Panel
10" Touch Panel with Tilt & Swivel enables better viewing for the operator



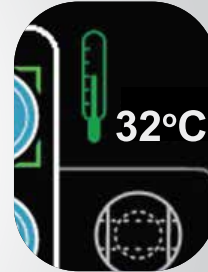
Digital Preview Collimation⁺
Position the collimator by virtually adjusting the blade positions on touch screen LCD panel & save yourself from unnecessary radiation exposure



Real-Time Image Management^{*}
Access to Image improvement features ie: Noise Reduction, Edge enhancement, Image Rotation, Image Inversion & Reference Image



Large 10" intuitive touch panel control



Real-Time Heat Monitoring
The technician can visualise monoblock thermal status in real-time on the Touch Panel



Live Fluoro
Live & LIH Fluoroscopy Image display at Control Panel for accurate C-Arm positioning with no retakes



Advanced Laser Aimer⁺
Access to Laser aimer operations with Pointer display on Live / LIH Image



Protection to Patient and Surgeon from Unnecessary Dose



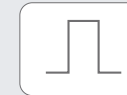
Digital Preview Collimation⁺
Collimator Preview without X-Ray exposure helps in dose reduction



Laser Aimer⁺
for fast & Radiation free positioning from Control Panel



Auto Mode
Automatic dose control to adjust system's Exposure automatically as per the body region



Low Rate Pulsed Fluoroscopy^{*}
available for significant dose reduction



Digital Image Rotation from Control Panel^{*}



Leakage Radiation is virtually Eliminated

^{*} Available in MXDI, Memory Variant
⁺ Optional Features

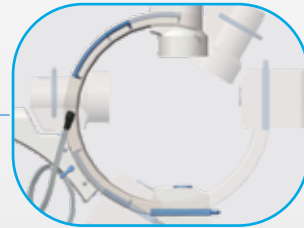
Superior Ergonomic Design for Effortless Operations



Intelligent Steering Mechanism with rear wheel rotation



Low Lateral Height ensures operator comfort by minimizing the need for table movement



Arc Depth of 63 cm and clearance of 76 cm for unobstructed patient access



Modular Workstation with dual foldable high resolution monitors & spill proof keyboard*



Efficient Foot Brake is located on right side of the console



Effortless quarter turn locking mechanism.
Aluminium extruded "Rust Free" vertical column for silent up/down movement

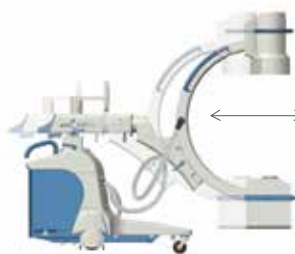
*Available in MXDI variant only



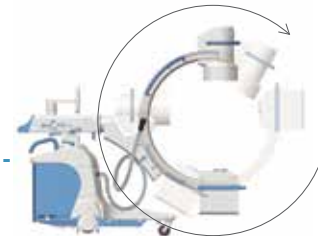
± 210° Axial Rotation



± 12.5° Wig Wag Movement



200 mm Horizontal Movement



-30° + 90° Orbital Rotation



450 mm Vertical Movement

Streamlined Workflow



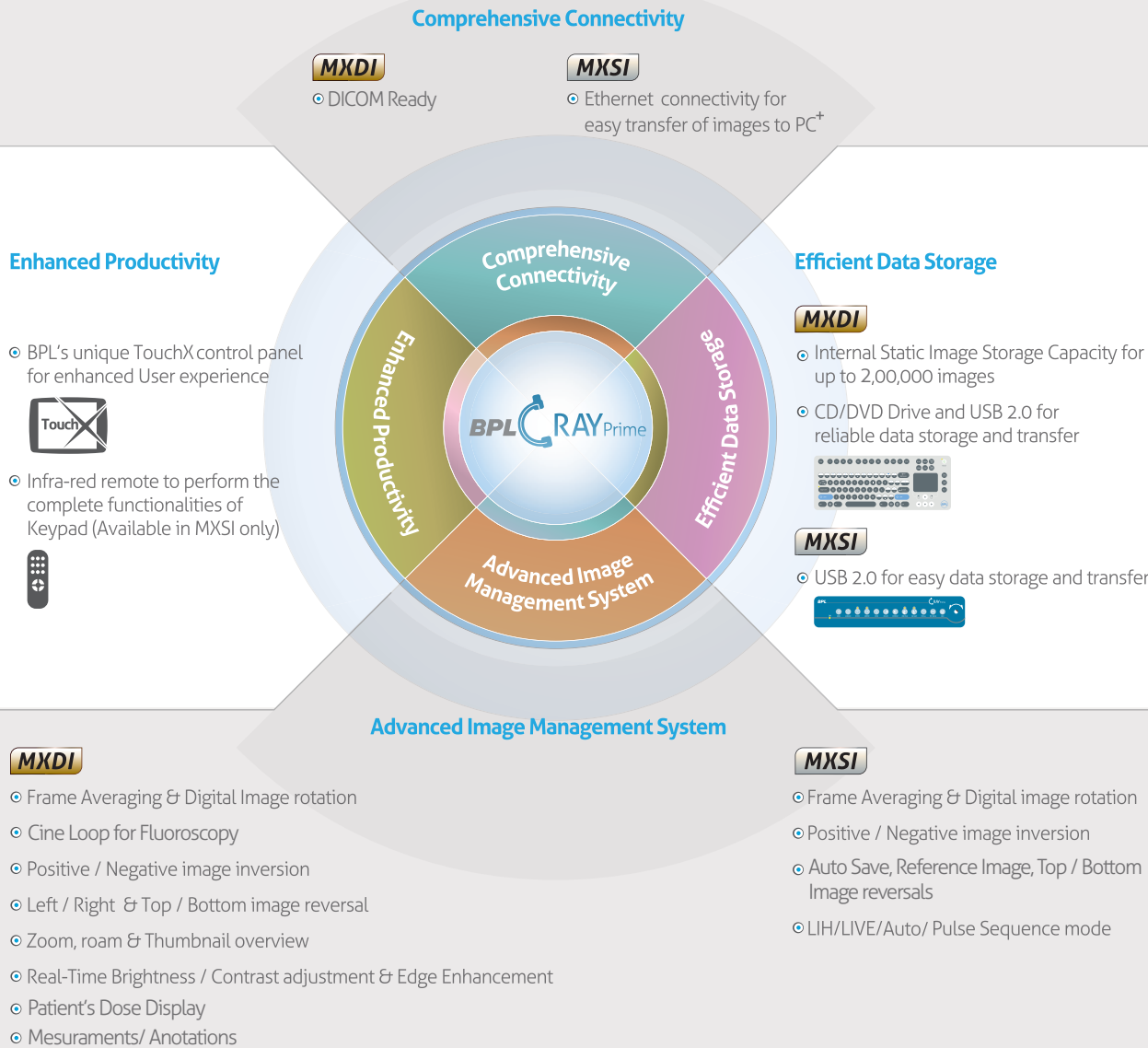
PC Memory



Embedded Memory



BPL C-Ray Prime is available in 2 variants based on Image Memory that will suit your needs and workflow.



Wide Clinical Applications



+ Optional Features



Technical Specifications

X-Ray Generator

Type	High Frequency; 40KHz
Output	3.5 KW / 5 KW#
KV Range	
(Fluoroscopy / Radiography)	40 - 110 KVp; 40 - 120 KVp#
Fluoroscopy mA	0.1 - 3mA; 0.1 - 3.7 mA#
Boost Mode	Up to 7.5 mA / 15 mA#
Radiography mAs	1 - 200 mAs / 250 mAs#

X-Ray Tube

Focal Spot Nominal Value	
(Small / Large)	0.6/ 1.5mm ² ; 0.3/ 0.6mm ² #
Collimation System	
Iris diaphragm ⁺	For Concentric, radiation free collimation
Parallel Shutter with Rotation ⁺	for Symmetric, radiation free collimation

Control Panel

Display Type	Full Touch, Colored Graphical Display
Display size	10"
Touch Panel Arm	360 degree swiveling facility & Tilting Facility
Operating Modes	Continuous Fluoroscopy Mode Pulsed Fluoroscopy Mode** Boost Fluoroscopy Mode Snapshot Mode** Auto Mode Radiography Mode

Image Intensifier

Type	9Inches; Triple Field (9"/6"/4.5")
Grid	Round, 9"- 10:1, 103 Lines, FD: 36-39"

CCD Camera

Type	1/2" CCD, 752 x 582 Pixels, CCIR, 625 lines; 50Hz
------	---------------------------------------------------

Image Memory

MXSI	Internal 100 image storage, Auto Save IR Remote, USB Drive Storage
MXDI	PC Base Advanced Image memory with Real-time & Post-processing features; storage upto 2,00,000 images DICOM Ready Dose Display

Mechanical Characteristics

C-Arm Dimension	
Vertical Run	450 mm
Horizontal Run	200 mm
Wig-Wag (Swivel Range)	± 12.5°
Angulation	± 210°
Orbital Movement (Over scan)	120° (- 30° to + 90°)
S.I.D	960 mm
Arc Depth	63 cm
Clearance	76 cm

Workstation (Modular)

Displays ; LCD Monitors	: 19" Flicker-free with LED backlight : Medical Grade Monitor ⁺
Foldable Display	Yes

Other Functions

Emergency Stop	
Foot Switch	
Equipment Malfunction Indication	

Electrical Characteristics

Single phase voltage	230 ± 10% V AC, 50/60 Hz
----------------------	--------------------------

Designed for Safety & Reliability

C-RAY Prime is equipped with comprehensive safety features which ensures that your C-ARM's performance is at its best and provides you with maximum Uptime

- Automatic shut off to prevent over-heating of the Equipment
- Emergency Stop switch for manual shut off
- Complete shielded wiring and EMI protection
- Isolation Transformer safeguards the equipment from power surge, Spike, fluctuation and the operator from electric shocks

Powered by



We Engineer Uptime

**Service Helpline
1800-425-2355**

Designed to meet IEC 60601 safety standards, AERB regulations and BIS IS 7620 Part 1

Available in C-RAY PRIME RA (Rotating Anode Version)

* Available in MXDI Memory Variant

+ Optional Features

A Global Medical Technology Company



- BPL Med Tech HQ
- BPL Med Tech Factory
- ◆ Penlon HQ

Service is Powered by:



Service Helpline
1800-425-2355

CERTIFIED ISO 13485 : 2016 COMPANY

BPL MEDICAL TECHNOLOGIES PRIVATE LIMITED

Registered office: 11th KM, Bannerghatta Road,

Arakere, Bangalore - 560076, India

Phone +91 80 26484388/ 2648 4350

Toll Free 1800-425-2355

Website www.bplmedicaltechnologies.com

CIN:U33110KA20212PTC067282

For Enquiries: sales.medical@bpl.in



Happier Living Everyday

© 2018 BPL Medical Technologies Private Limited. All rights reserved. BPL Medical Technologies Private Limited reserves the right to make changes in product features, specifications, aesthetics and/or to discontinue the same at any time without notice or obligation

BPL CRAY PRIME .5 K X.5 K WITH MXSI MXDI RA 6PGB 23:10:18